



Protection Cluster
South Sudan



2025 - Juba, South Sudan



PROTECTION CLUSTER – TERMS OF REFERENCE

The mission of Protection Clusters is to ensure well-coordinated, effective, and principled preparedness actions and responses, and that protection is at the core of all humanitarian actions and recognized as essential in any nexus with development and peace action to achieve solutions.

Through such coordination, people are better protected in humanitarian crises and their rights respected and solutions found in accordance with international law.

The protection cluster is led by **UNHCR** and includes 'areas of responsibilities' that are attributed to **UNFPA** for gender-based violence (GBV), to **UNICEF** for child protection, to **UNMAS** for mine action, and to **NRC** and **UN-Habitat** for housing, land and property (HLP).

Recognizing that **protection is central to the purpose of any humanitarian response**, the protection cluster advises and provides continuous analyses of protection risks to the Humanitarian Coordinator (HC) and HCT, and works with all clusters to strengthen protection and rights-based responses. [More details HERE](#)



PROTECTION CLUSTER - OVERVIEW

NPC

4 | 2



UNHCR and NRC have the co-coordination functions in South Sudan

SubNational Coordinators and Co-Coordinaotrs

26

Geographical Coverage – SSD States and Abyei

11

HNRP 5W reporting members

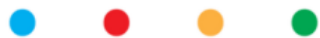
94

5W Reporting IPs

108

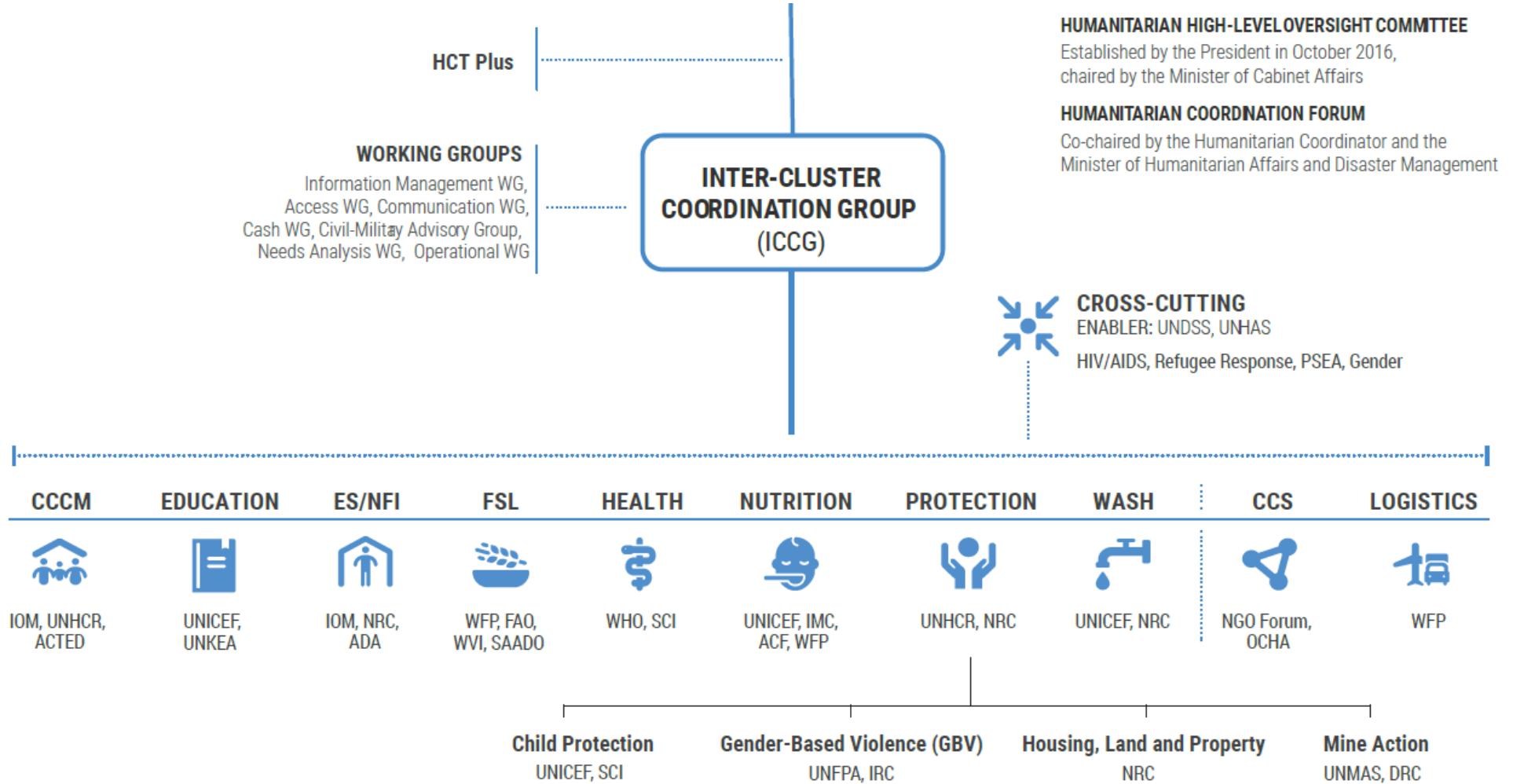
SSD Protection Cluster affiliated organizations: 366

For more information, please, visit the South Sudan operation page at Global Protection Cluster [website](#)



PROTECTION CLUSTER – HCT-ICCG STRUCTURE

HUMANITARIAN COUNTRY TEAM (HCT)
Chaired by the Humanitarian Coordinator
 United Nations, International NGOs, National NGOs,
 NGO Forum Secretariat representative, Observers

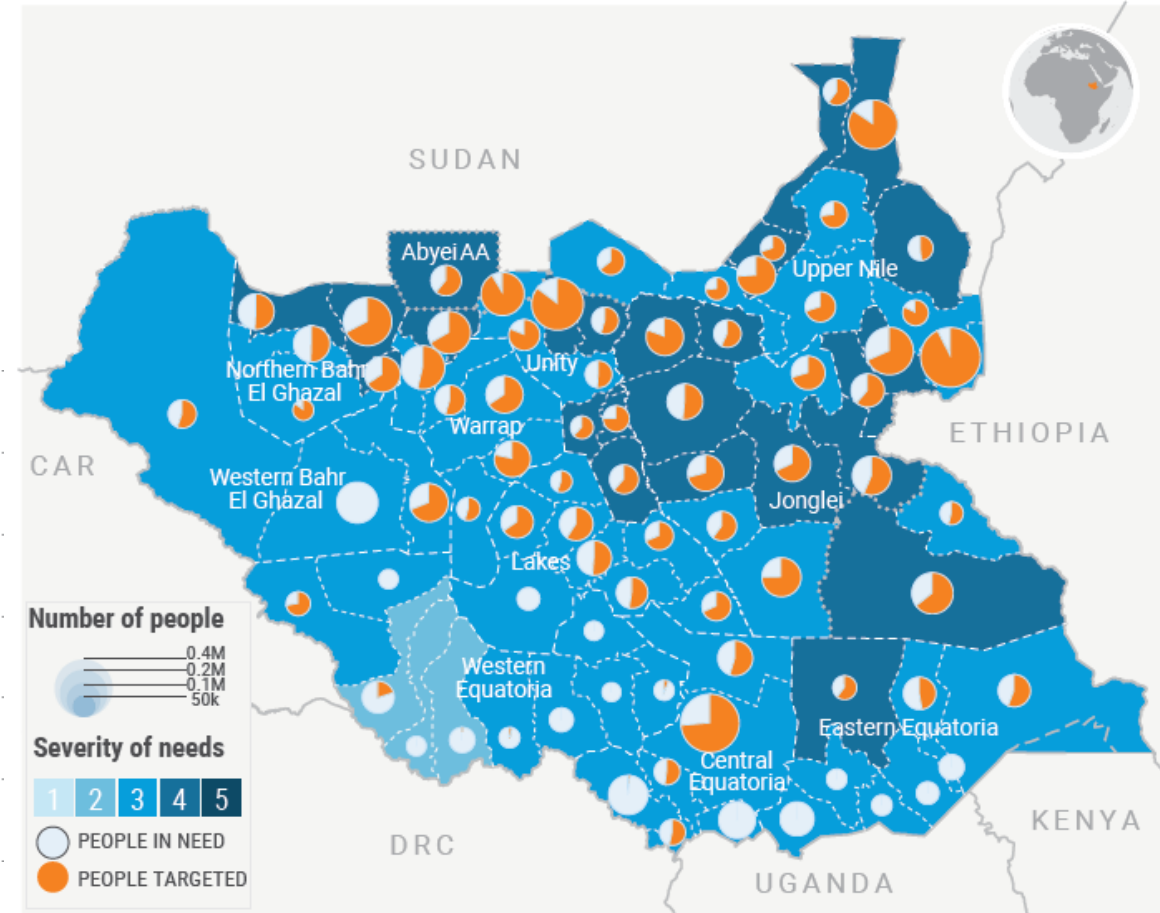


PROTECTION CLUSTER – BASELINE DATA HNRP2025

PEOPLE IN NEED	PEOPLE TARGETED	EXPOSED TO AT LEAST ONE OF THE TOP-5 PROTECTION RISKS	REQUIREMENTS (US\$)
5.3M	1.5M	9.18M	\$81M

	PEOPLE TARGETED	PEOPLE IN NEED	REQUIREMENTS (US\$)
Protection	1.5M	5.3M	\$81M
Child Protection	0.26M	3.1M	\$26M
Gender-Based Violence	0.42M	2.8M	\$28M
Mine Action	0.38M	2.4M	\$7M
Housing, Land and Property	0.09M	1.2M	\$6M
General Protection	0.19M	2.7M	\$15M

Inter-sectoral severity of needs, PiN and target by county



Digital version of this page is available on Humanitarian Action

bit.ly/3B9zhN8



PROTECTION CLUSTER – STRATEGIC ADVISORY GROUP

The SAG is comprised of key protection organizations and aims to support Protection Cluster coordination in an advisory role. The SAG promotes the achievement of the South Sudan Protection Cluster strategy, highlights new areas of strategic direction for consideration and engages in constructive discussions regarding the implementation of the Protection Cluster’s work plan.

SAG is responsible for developing, reviewing and adjusting the strategic framework, priorities and work plan for the Protection Cluster. To do this effectively, the SAG will ensure information is gathered and shared collaboratively, in a manner that is representative of the Protection Cluster’s broader membership.

PERMANENT MEMBERS

11

ELECTED MEMBERS

10

ALTERNATE MEMBERS

2



PROTECTION CLUSTER – STRATEGIC DIRECTIONS

STRATEGIC DIRECTIONS

Localization and
Capacity Building

HDP Nexus

HCT Protection
Advisory

Protection Risk
Monitoring

Advocacy

Cros-cutting
Coordination

Sectoral Cash
C4P

PROTECTION PRIORITIES

Sustain life-saving activities

Expand community
empowerment

Address root causes

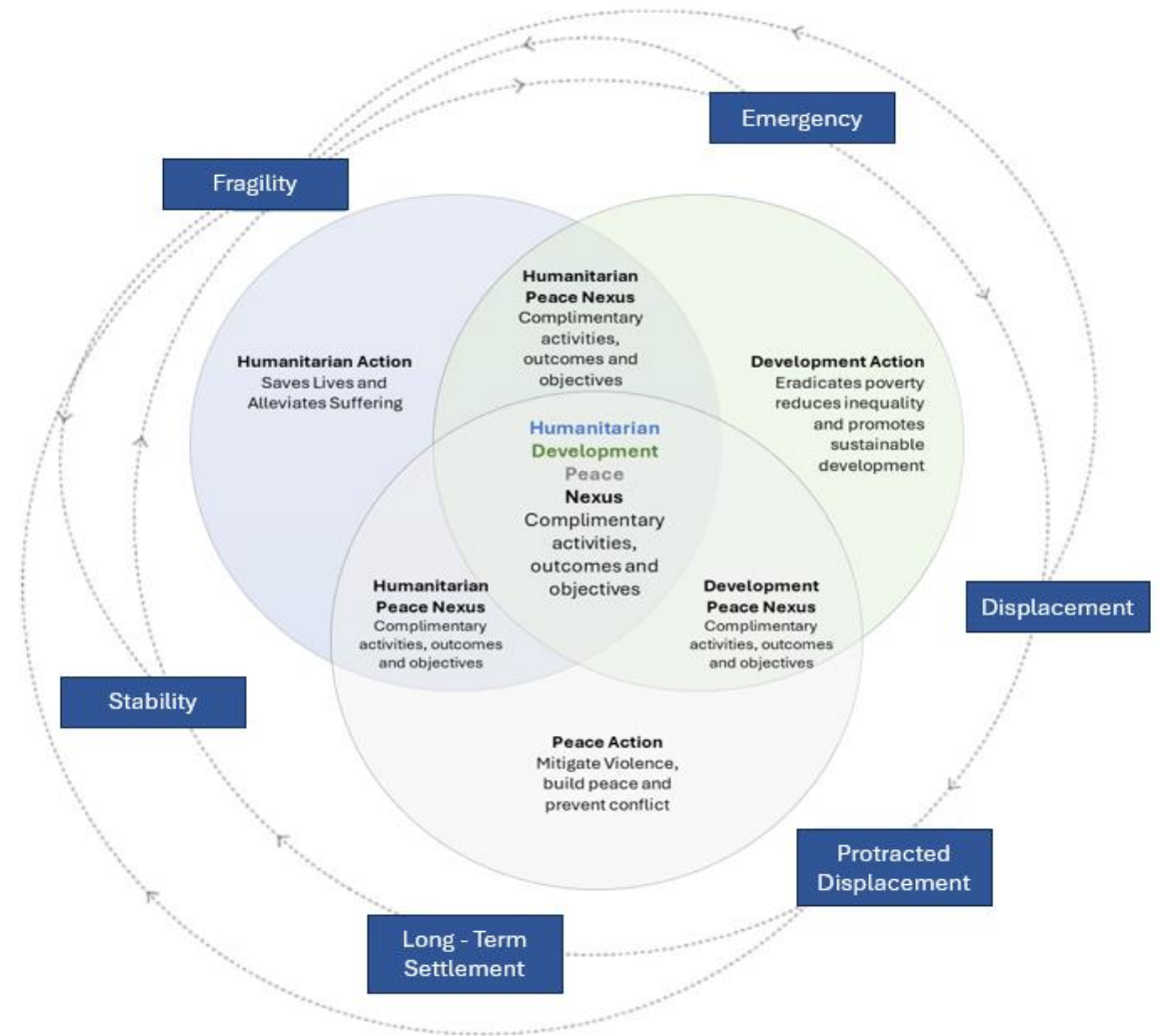
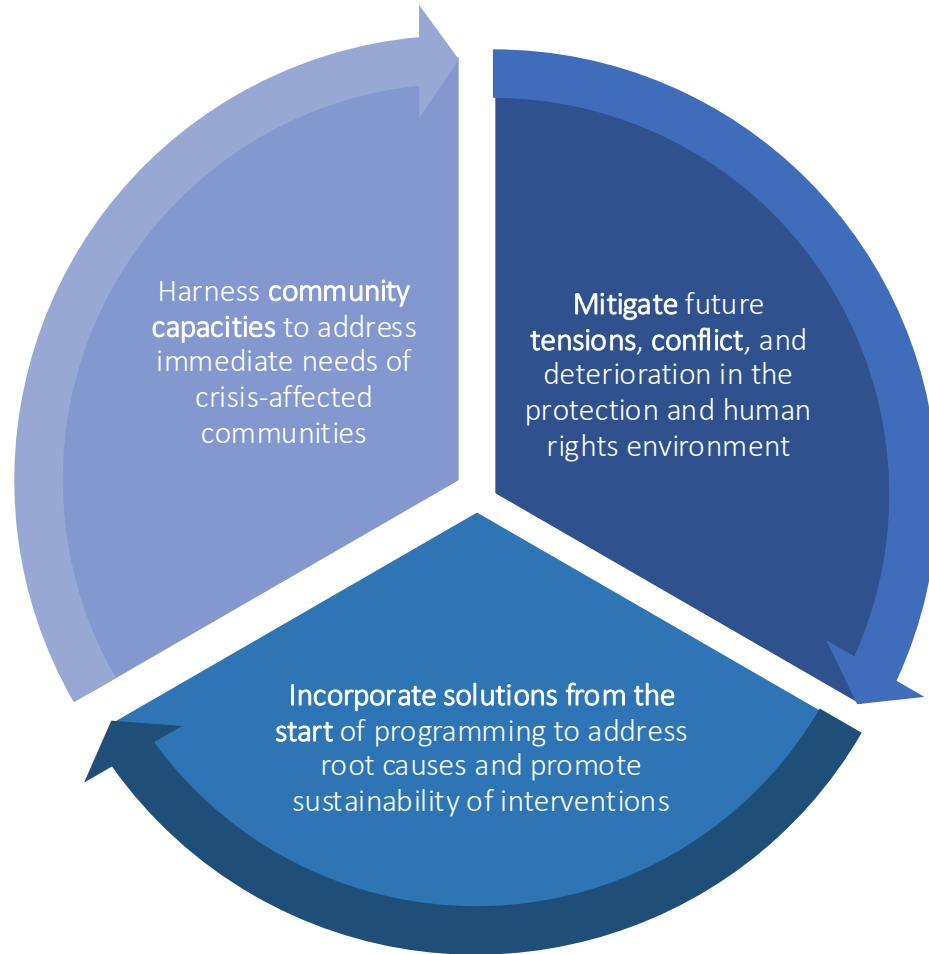
Seek solutions

South Sudan Humanitarian Country Team (HCT) Protection Strategy – 2023-2024: bit.ly/3ZvB5lf
Accountability to Affected Populations (AAP) Strategy for South Sudan: bit.ly/4fdSD1F
South Sudan Gender Based Violence Area of Responsibility Strategic Plan (2024 - 2025):
bit.ly/3Bn57pF

South Sudan National Mine Action Strategy 2024 - 2028: bit.ly/3VvN9Z9
Prevention of sexual exploitation and Abuse (PSEA) Taskforce: bit.ly/41rk2tt
Localization Vision & Strategy: Humanitarian Country Team, South Sudan:
bit.ly/3D92Jnb



PROTECTION CLUSTER – HDP NEXUS



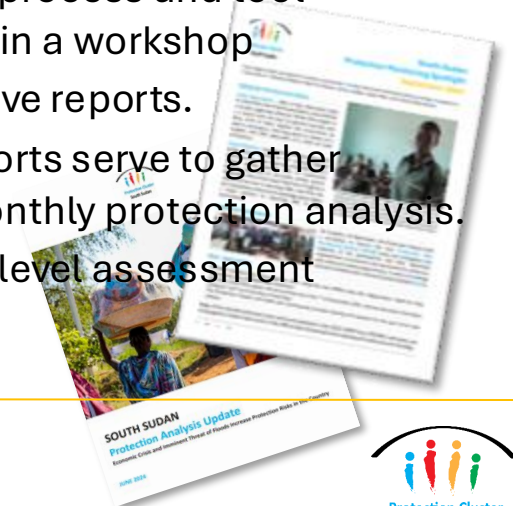
PROTECTION CLUSTER – PRMS

PRMS at Glance:

- Established since 2022 and aligned with GPC PAF since 2024.
- Includes data gathering on all 15 protection risks and fully aligned with the new 2024 JIAF 2.0.
- Endorsed by the HC as a key provider of knowledge on protection for needs analysis, analysis of risk for the centrality of protection and prioritization including,
- In cooperation with OHCHR, feeds the IHL outcome indicator levels for HNO intersectoral severities.
- Currently implemented by over 40 UN agencies, national NGOs, and INGOs in SSD.
- Caters of analysis of quantitative and qualitative data and information (monthly, quarterly, half-year analysis)

PRMS Tools:

- **Key Informant Interview (KII) Tool** – Monthly data collection conducted by PROMO members with KII. Tool covers all 15 GPC protection risks.
- **Observation Method Tool** - Tool designed for rapid site assessments with coverage of 10 risks.
- **FGD Tool** - The tool was designed for focus group discussions
- **AoR Expert Tool** - Cumulatively, the AoR Expert tool covers 10 Risks. It is designed to capture analytical indicator data for HNO as well as enable quarterly reporting through a combination of qualitative and quantitative inputs.
- **Sub-national Risk Assessment Tool** - A quarterly process and tool envisaged to assess risks at the sub-national level in a workshop
- **DEEP** - DEEP is a searchable repository of qualitative reports.
- **Weekly Reports** - Weekly internal sub-national reports serve to gather knowledge on occurrences rapidly and support monthly protection analysis.
- **Inter-Sectorial Needs Assessment** – Household-level assessment (embedded in DTM)



PROTECTION CLUSTER – MHPSS

“In South Sudan, mental health issues are overshadowed by poverty, violence, and displacement. Neglected by the health system and confronted by deep-rooted stigma, many people face their mental health struggles in silence, enduring a daily battle that goes unseen and unheard.” - [MSF](#)

PEOPLE AFFECTED

5.3M

PEOPLE WITH SEVERE MHC*

>200K

PEOPLE WITH MILD MHC*

>1M

% OF POPULATION (EST. [WHO](#))

10-20%

MHPSS activities are for those that have a specific aim to improve mental health and psychosocial wellbeing of a target population. PC and AoRs play a key role in integrating and strengthening MHPSS in the humanitarian response and nexus to development and solutions as part of their mandate.

To address degrading MHPSS situation PC and AoRs included MHPSS activities/components in designing their target activities and priorities for 2025 based on the protection indicators. [DETAILS](#)

GENERAL PROTECTION

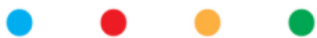
5 INDICATORS
GP 3-4-5-9-10

CHILD PROTECTION

3 INDICATORS
CP 3-4-5

GENDER-BASED VIOLENCE

2 INDICATORS
GBV 3-4



PROTECTION CLUSTER – FRAMEWORKS & PRODUCTS

- Protection Cluster Bi-Weekly [Field] Updates
- [Protection Cluster and AoRs 5W Monthly Report](#)
- [Monthly Publications: PROMO Statistical Factsheet](#)
- [Quarterly Publications: PROMO Spotlight](#)
- [SSD PRMS Training Manual](#)
- [PC Protection Analytical Updates](#)
- [End Year Report](#)
- [5W Dashboard](#)
- [PRMS Dashboard](#)
- Service Mapping 4W Dashboard (TBA)
- PC-CCCM Cooperation Framework
- PC-UNMISS Cooperation Framework
- PC-Development Actors Cooperation Framework
- [SSD Flood Preparedness Plan and Guidance Note](#)
- [PRMS Transformation Update](#)
- [5W Guidance Note](#)
- [Protection Cluster South Sudan Guidance on MHPSS](#)
- [Guidance note on C4P \(Cash for Protection\)](#)

SSD Protection Cluster Digital Library in MS Teams contains (partly accessible outside UNHCR):

- Strategies
- SOPs/TORs
- Guidance Notes
- Documents
- Media
- Presentations
- Common working space
- Archiving of documents
- Other relevant resources



Updates are done on ad-hoc/daily/weekly/monthly basis [\[ACCESS REQUEST\]](#)

- Please visit [PC SSD Contact Collection tool](#) to register as a cluster member focal point or register e-mail on the distribution list.
- Please visit [South Sudan | Global Protection Cluster](#) for updates, reports, and assessments.

