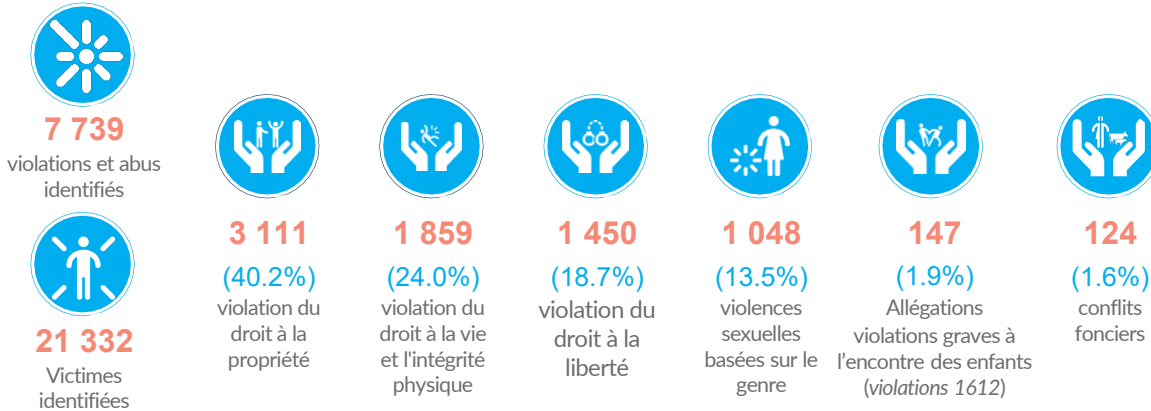
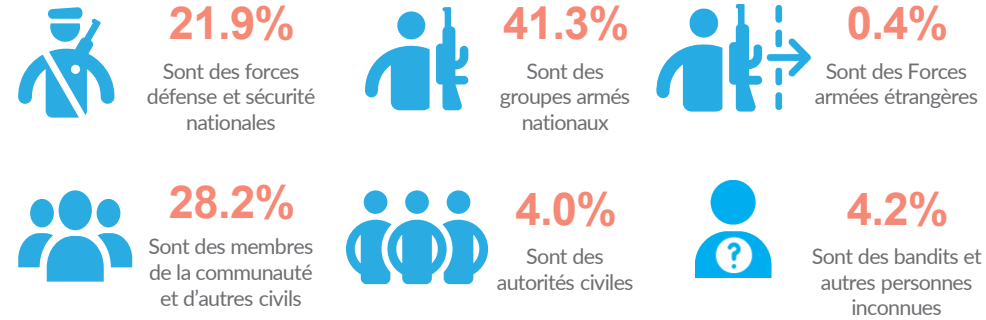


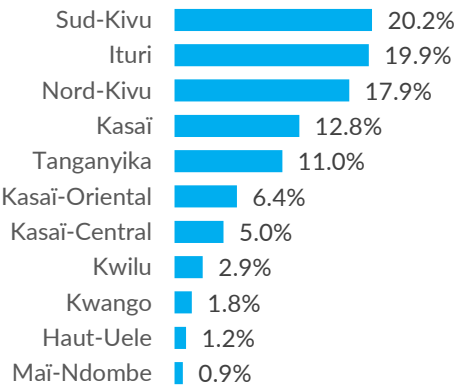
### CAS DE PROTECTION IDENTIFIÉS



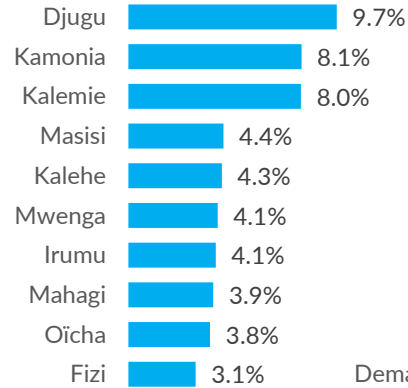
### PROFIL DES AUTEURS PRÉSUMÉS



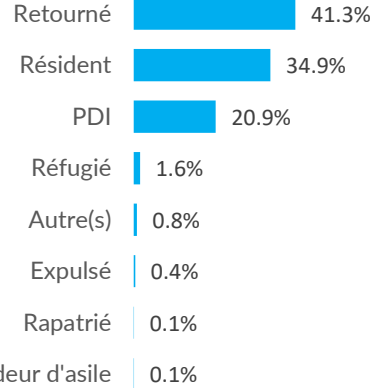
### VIOLATIONS PAR PROVINCE



### VIOLATIONS PAR TERRITOIRE (Top 10)

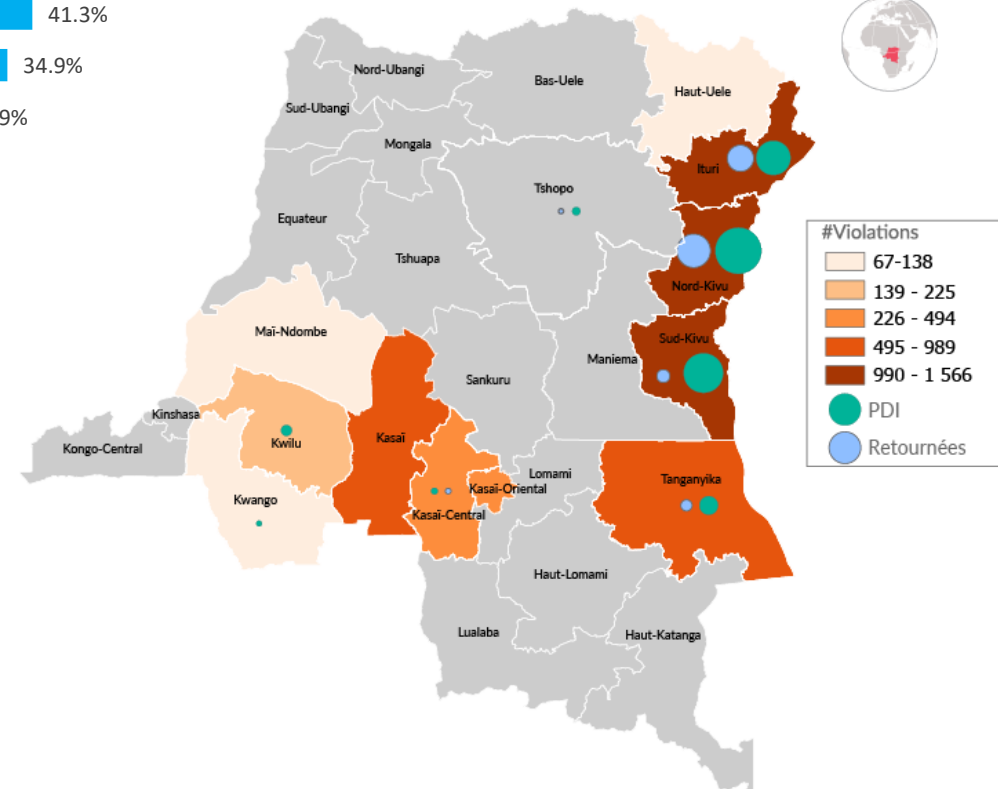


### STATUTS DES VICTIMES

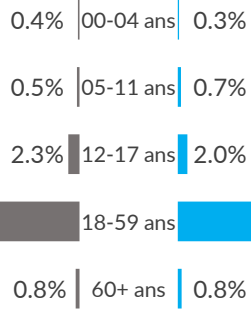


**6.4M**  
PDI

**2.9M**  
PDI retournées



### PROFIL DES VICTIMES (sexe/âge)



### VICTIMES PAR GENRE

