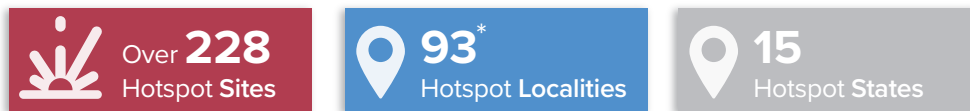


Protection Hotspots in Sudan

as of 31 December 2024

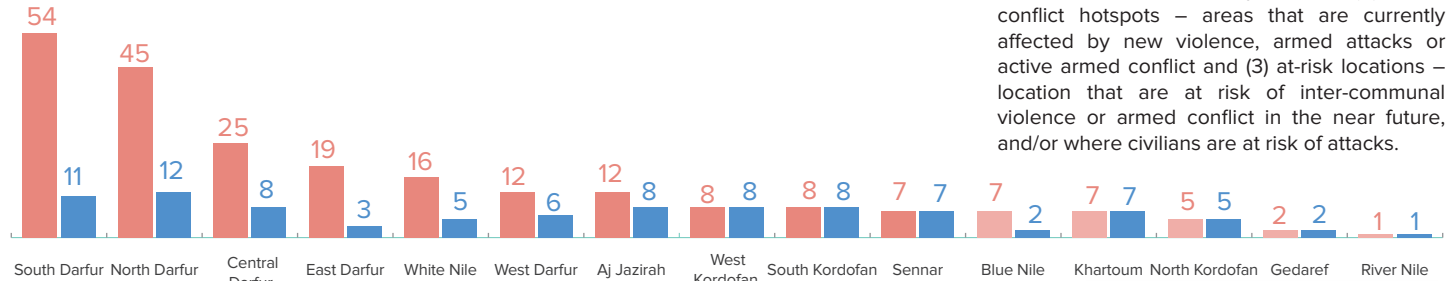
1/3

Key Figures

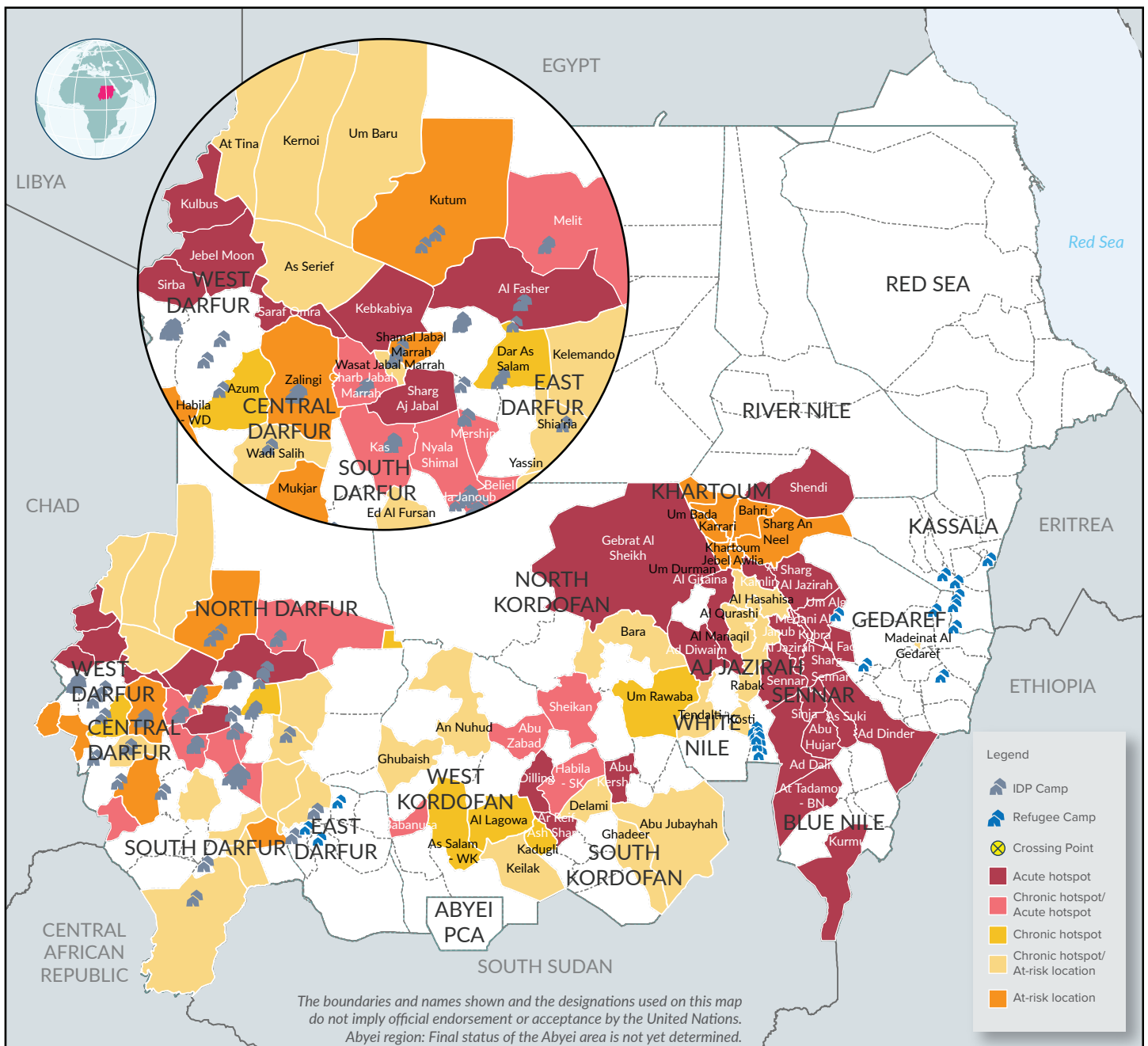


The Protection Sector hotspot mapping identifies conflict and at-risk areas to provide early warning and inform preventative and response action. The mapping distinguishes between (1) chronic conflict hotspots – areas that are affected by prolonged, protracted and/or repeated inter-communal violence, armed attacks and low intensity conflict (2) acute conflict hotspots – areas that are currently affected by new violence, armed attacks or active armed conflict and (3) at-risk locations – location that are at risk of inter-communal violence or armed conflict in the near future, and/or where civilians are at risk of attacks.

Number of Hotspots Sites and Localities per State



* The highest settlement classification is applied for mapping at the locality level. ** IOM DTM, Sudan - Countrywide Mobility Update 12 (Bi-Weekly), December 2024. *** CoR, UNHCR: update of September 2024



The boundaries and names shown and the designations used on this map do not imply official endorsement or acceptance by the United Nations. Abyei region: Final status of the Abyei area is not yet determined.



State	Locality	Hotspot areas	Approximate number of civilians at risk in the Hotspot areas	Hotspot category
Aj Jazirah	Al Hasahisa	Al Hasahisa	Not available	At-risk location
Aj Jazirah	Al Kamlin	Al Kamlin	6,000 households	Acute hotspot
Aj Jazirah	Al Manaqil	Al Manaqil	Not available	At-risk location
Aj Jazirah	Al Qurashi	Al Qurashi	Not available	At-risk location
Aj Jazirah	Janub Aj Jazirah	Janub Aj Jazirah	Not available	Acute hotspot
Aj Jazirah	Medani Al Kubra	Medani Al Kubra	Not available	Acute hotspot
Aj Jazirah	Sharg Aj Jazirah	Sharg Aj Jazirah	119,395 individuals	Acute hotspot
Aj Jazirah	Um Algura	Tamboul and surrounding villages	853 households	Acute hotspot
Blue Nile	Al Kurmuk	(blank)	Not available	Acute hotspot
Blue Nile	At Tadamon - BN	Gulli, Bout and various villages	14,100 households	Acute hotspot
Central Darfur	Azum	Um Shalaya, Momo, Marra and Rongatass	50,000 individuals	Chronic Hotspot/ At-risk location
Central Darfur	Gharb Jabal Marrah	Nertiti, Guildo, Fokeo Deko, Khour Ramala, Tour	Not available	Chronic Hotspot/ Acute Hotspot
Central Darfur	Mukjar	Wastani, Amir Jaded, Dambar	Not available	Chronic hotspot
Central Darfur	Shamal Jabal Marrah	Rokero, Fanga, Sabanga, Daya Burgo, Mohammedin,	11,200 individuals	Chronic hotspot
Central Darfur	Um Dukhun	Abujaradil (bordering with Um Dafoug SD/CAR); Kabar,	180,000 individuals	Chronic Hotspot/ Acute Hotspot
Central Darfur	Wadi Salih	Wadi Salih, Delij	Not available	At-risk location
Central Darfur	Wasat Jabal Marrah	Golo	Not available	At-risk location
Central Darfur	Zalingi	Zalingei town	Not available	Chronic hotspot
East Darfur	Assalaya	Um Da'ai, Mejaled areas	Estimated population of 280,000	At-risk location
East Darfur	Shia'ria	Khazan Jadeed, Abu Dungal, Senat villages surrounding Sha'aria	Estimated population of 350,000	At-risk location
East Darfur	Yassin	Rejalla, Sani Afndo, Sela'a areas	Estimated population of 240,259	At-risk location
Gedaref	Al Fao	Al Fao	Not available	Acute hotspot
Gedaref	Madeinat Al Gedaref	Madeinat Al Gedaref	Not available	At-risk location
Khartoum	Bahri	Bahri	Not available	Chronic hotspot
Khartoum	Jebel Awlia	Jebel Awlia	Not available	Chronic hotspot
Khartoum	Karrari	Karrari	Not available	Chronic hotspot
Khartoum	Khartoum	Khartoum	Not available	Chronic hotspot
Khartoum	Sharg An Neel	Sharg An Neel	Not available	Chronic hotspot
Khartoum	Um Bada	Um Bada	Not available	Chronic hotspot
Khartoum	Um Durman	Um Durman	Not available	Chronic hotspot
North Darfur	Al Fasher	Abu Zereiga	Not available	Acute hotspot
North Darfur	Al Fasher	El Fasher rural areas (Korma, Shagara, Golo, Sarafaya, Birka, Jonjonat, Jokhi, Tirkanaya)	500,000 individuals	At-risk location
North Darfur	Al Fasher	El Fasher town including Abu Shouk camp	Approx. 1,000,000 individuals	Acute hotspot
North Darfur	Al Fasher	Zamzam camp	More than 500,000 individuals	Acute hotspot
North Darfur	Al Koma	Al Koma town	Not available	Chronic Hotspot/ At-risk location
North Darfur	As Serief	As Serief locality	Not available	At-risk location
North Darfur	At Tina	Various locations	Not available	At-risk location
North Darfur	Dar As Salam	Dar Al Salam town	Not available	At-risk location
North Darfur	Dar As Salam	Shangil Tobaya	Not available	Chronic Hotspot/ At-risk location
North Darfur	Kebkabiya	Kebkabiya town	Not available	Acute hotspot
North Darfur	Kelemando	Kalemendo and Abudeleik	Not available	At-risk location
North Darfur	Kerno	Various locations	Not available	At-risk location
North Darfur	Kutum	Anka, Ori, Bir Mazza and surrounds	Not available	Acute hotspot
North Darfur	Kutum	Zurug	Not available	Chronic hotspot
North Darfur	Melit	Melit town	Not available	Chronic Hotspot/ Acute Hotspot
North Darfur	Saraf Omra	Saraf Omra town and surrounding villages	Not available	Acute hotspot
North Darfur	Um Baru	Various locations	Not available	At-risk location
North Kordofan	Ar Rahad	Ar Rahad	Unknown	At-risk location
North Kordofan	Bara	Bara	Unknown	At-risk location
North Kordofan	Gebat Al Sheikh	Jabrat El Sheikh	Unknown	Acute hotspot
North Kordofan	Sheikan	Sheikan	Unknown	Chronic Hotspot/ Acute Hotspot
North Kordofan	Um Rawaba	Um Rawaba	Unknown	Chronic Hotspot/ At-risk location
River Nile	Shendi	Shendi	10,410 households	Acute hotspot
Sennar	Abu Hujar	Abu Hujar	Not available	Acute hotspot
Sennar	Ad Dali	Abu Erif Village	290 households	Acute hotspot
Sennar	Ad Dinder	Ad Dinder	Not available	Acute hotspot
Sennar	As Suki	As Suki	Not available	Acute hotspot
Sennar	Sennar	Sennar	Not available	Acute hotspot
Sennar	Sharg Sennar	Sharg Sennar	Not available	Acute hotspot
Sennar	Sinja	Sinja	Not available	Acute hotspot
South Darfur	Al Radoum	Wad Gagam admin Unit	16,000 individuals	At-risk location
South Darfur	Beleil	Beleil town, Hijer Tonyo, Kalma IDP camp	251,696 individuals	Chronic Hotspot/ Acute Hotspot
South Darfur	Buram	Buram town and the surrounding areas	42,014 individuals	At-risk location
South Darfur	Ed Al Fursan	Ed Elfursan town, Kubbum, and the surrounding areas	101,559 individuals	At-risk location
South Darfur	Gereida	IDPs in Gereida town, Toweil, Dagama, Dikka, Kass town and the surrounding areas.	25,700 individuals	Chronic hotspot
South Darfur	Kas	Kass town and the surrounding areas.	142,523 individuals	Chronic Hotspot/ Acute Hotspot
South Darfur	Mershing	Mershing and Manawashi IDP camps, Hashaba, and Adwa return areas.	68,705 individuals	Chronic Hotspot/ Acute Hotspot
South Darfur	Nyala Janoub	All nighbohods in Nyala Janoub, Um Zaifa, El Siraif IDP and Mossei IDP camps.	278,980 individuals	Chronic Hotspot/ Acute Hotspot
South Darfur	Nyala Shimal	Nyala Shimal, Otash and Direig IDP camp	27,456 individuals	Chronic Hotspot/ Acute Hotspot
South Darfur	Sharg Aj Jabal	Deribat, Jawa, Kidineer, Leiba, and Sooni	118,840 individuals	Acute hotspot
South Darfur	Tulus	Tulus town and the surrounding areas.	340,760 individuals	At-risk location



Protection Hotspots in Sudan

as of 31 December 2024

3/3

State	Locality	Hotspot areas	Approximate number of civilians at risk in the Hotspot areas	Hotspot category
South Kordofan	Abu Jubayhah	Abu Jubayhah	Unknown	At-risk location
South Kordofan	Abu Kershola	Abu Kershola	Unknown	Acute hotspot
South Kordofan	Ar Reif Ash Shargi	Ar Reif Ash Shargi	Unknown	Acute hotspot
South Kordofan	Delami	Delami	Unknown	At-risk location
South Kordofan	Dilling	Dilling	Unknown	Acute hotspot
South Kordofan	Ghadeer	Kalogi	Unknown	At-risk location
South Kordofan	Habila - SK	Habila - SK	Unknown	Chronic Hotspot/ Acute Hotspot
South Kordofan	Kadugli	Kadugli	Unknown	Chronic Hotspot/ At-risk location
West Darfur	Beida	Arara	Information not available	Chronic hotspot
West Darfur	Habila - WD	Habila Town	Information not available	Chronic hotspot
West Darfur	Jebel Moon	Sileia, Kishkish	Information not available	Acute hotspot
West Darfur	Kreneik	Sisi	Information not available	Chronic hotspot
West Darfur	Kreneik	Um Tajok	Information not available	Acute hotspot
West Darfur	Kulbus	Kulbus town	Information not available	Acute hotspot
West Darfur	Sirba	Abu Suruj, Bur Selaiba	Information not available	Acute hotspot
West Darfur	Sirba	Kondobei	Information not available	Acute hotspot
West Darfur	Sirba	Sirba Town	Information not available	Acute hotspot
West Kordofan	Abu Zabad	Abu Zabad	Approximate number of IDPs for 1,053 families (source: DTM)	Chronic Hotspot/ Acute Hotspot
West Kordofan	Al Lagowa	Lagowa	Unknown	Chronic Hotspot/ At-risk location
West Kordofan	An Nuhud	En Nuhud	Unknown	At-risk location
West Kordofan	As Salam - WK	El Salam	Unknown	Chronic Hotspot/ At-risk location
West Kordofan	Babanusa	Babanusa	Unknown	Chronic Hotspot/ Acute Hotspot
West Kordofan	Ghubaish	Ghubaish	Unknown	At-risk location
West Kordofan	Kailak	Kailak	Unknown	At-risk location
West Kordofan	Keilak	Kharasana	Unknown	At-risk location
White Nile	Ad Diwaim	Ateshiree, Al Riyadh Al-Sharqiyah, and Al Riyadh Al Garbiya and various villages	645 households	Acute hotspot
White Nile	Al Gitaina	Various locations in Getana locality	300 households	Acute hotspot
White Nile	Kosti	Kosti	Not available	At-risk location
White Nile	Rabak	Rabak	Not available	At-risk location
White Nile	Tendalti	Tendalti	Not available	At-risk location

