

STRENGTHENING ENGAGEMENT WITH HPC

2024



**Core Session 3:
Presentation of
HNO-HRP 2025
revised model**



**GLOBAL PROTECTION
CONFERENCE FIELD ENGAGEMENT
& PREPARATION**

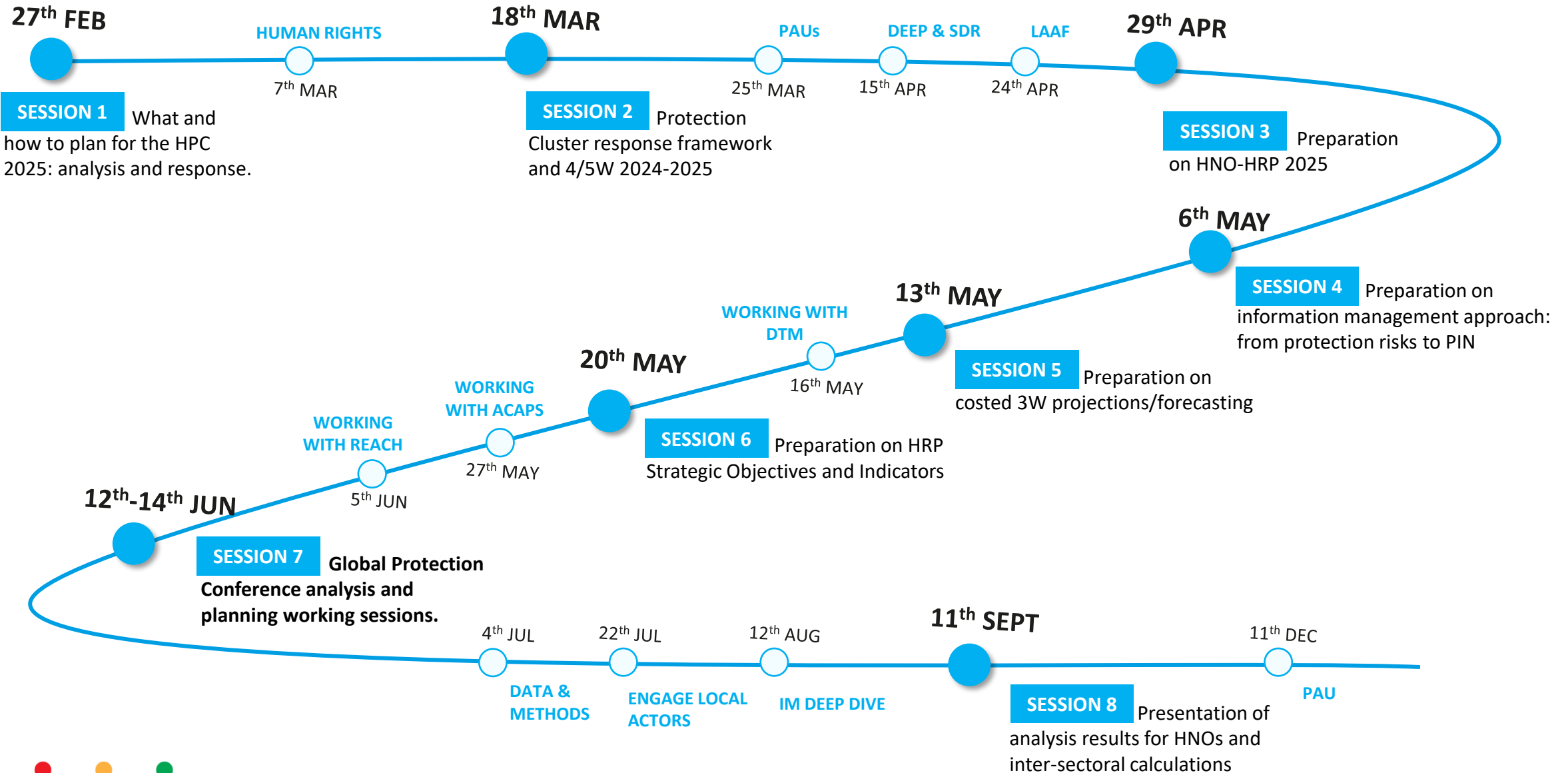
2024 Vision & Objectives

- ✓ Strengthening engagement with HPC 2024
- ✓ **Prepare and anticipate key steps of HNOs/HRPs**
- ✓ Incorporate **protection risks approach** into the methodology
- ✓ **Streamline analysis and planning products and processes :**
Protection Analysis Updates, Global Protection Updates, Protection Cluster Strategy and Humanitarian Response Plans
- ✓ **Harmonize** strategic and relevant information needs, objectives, indicators and response

*The learning series is designed to facilitate joint learning and act as **collective learning process** with field operations to jointly prepare the **Global Protection Conference in June 2024***



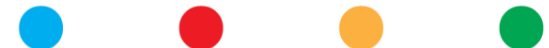
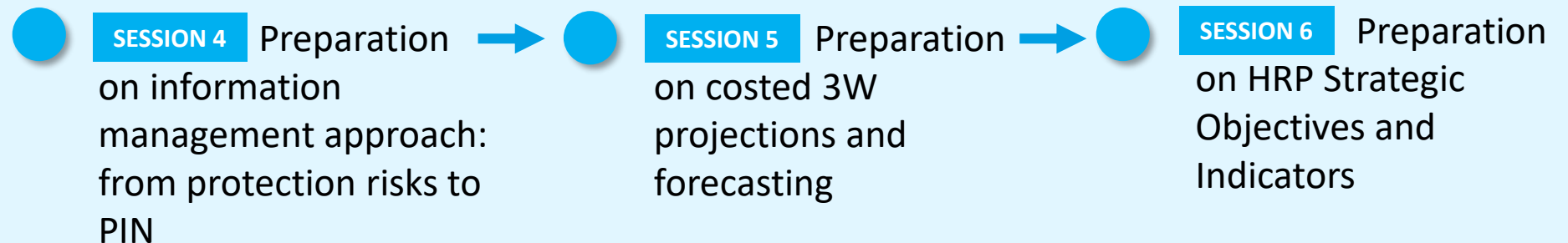
2024 LEARNING SERIES 2024 STRATEGIC TIMELINE



Objectives of Conference preparation sessions

These sessions establish critical GPC priorities to incorporate adjustments in Analysis and Planning approach from Operations

- ✓ What **steps/support you need and by when?**
- ✓ Who can join a **Methodology Temporary Working Group** to finalize tools and adapt to the field realities
- ✓ What are the **most critical aspects we need to address in the Conference?**





Protection Cluster objectives

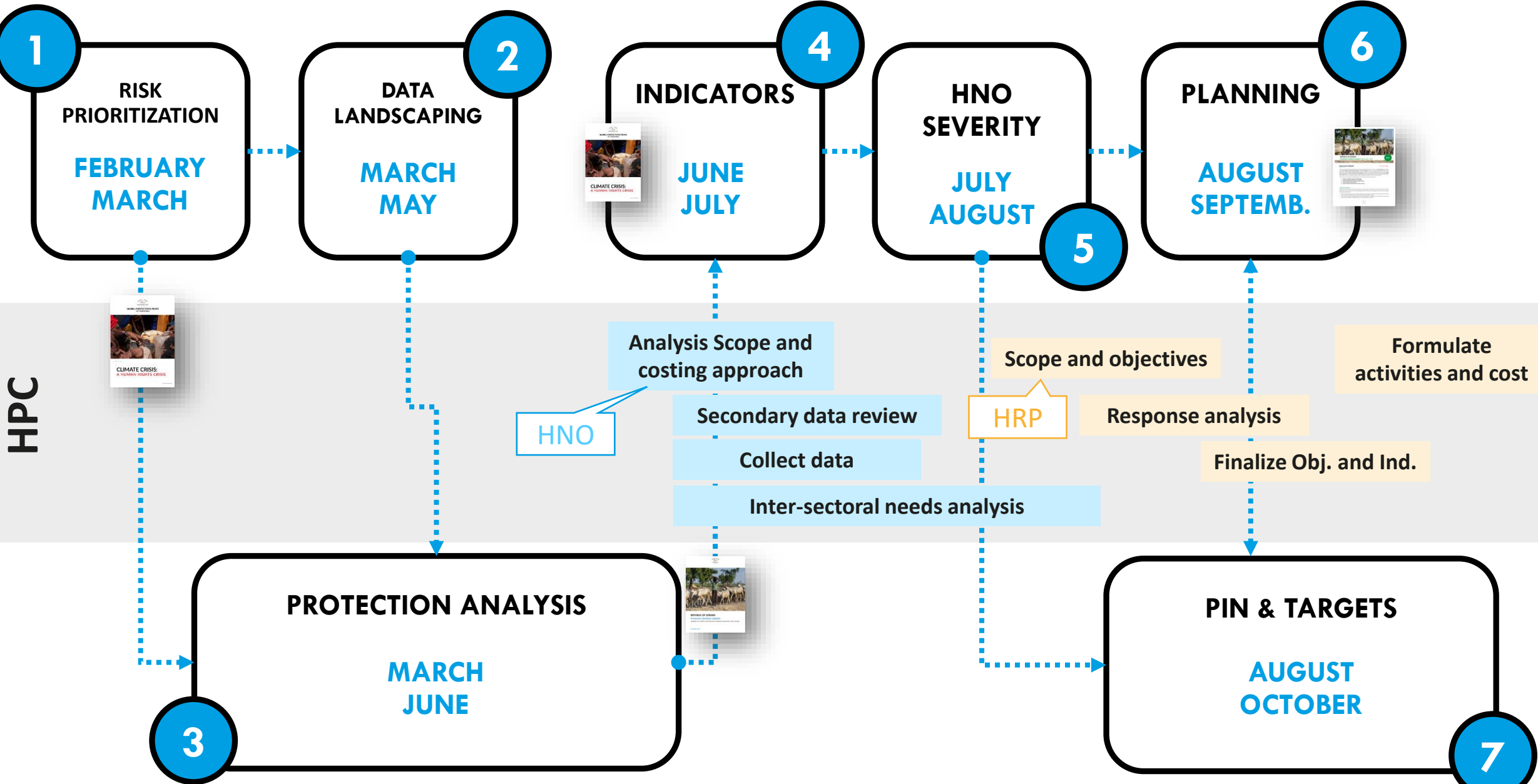
Agenda

- ✓ Protection Cluster objectives
- ✓ Overview of revised strategic approach
- ✓ Reflection on available tools/mechanisms
- ✓ Changes in JIAF and Protection Cluster contribution



Presentation of 2024 analysis and planning steps

2024 TIMELINE HNO & HRP ANALYSIS AND PLANNING STEPS



2024 Objectives

STREAMLINE ANALYSIS PROCESSES

Give more relevance to value judgment, joint analysis.

- Global manual
- Risks criteria
- Subnational risk severity (GPU)
- OCHA-JIAF engagement at global level

Ability to define severity when we have poor data

- Subnational risk severity (GPU)
- Information needs databank against risks
- Indicators databank (qualitative/quantitative)
- Alignment of REACH, ACAPS and DTM

Common framework for severity and PIN with AoRs

- Definition of 3 common pillars for proxy indicators
- Alignment of AoRs indicators per each pillar

STRENGTHEN PROTECTION CLUSTER ADVOCACY

Have an objective of the HRP consistent with protection risks.

- Revised Protection Response Framework (harmonized against risks)

Less dependency on PIN for advocacy and external engagement with HC/HCT.

- Global Manual
- Definition of people exposed to risks, vs. People in need

7.5 M Exposed to risks **2.5 M** PIN

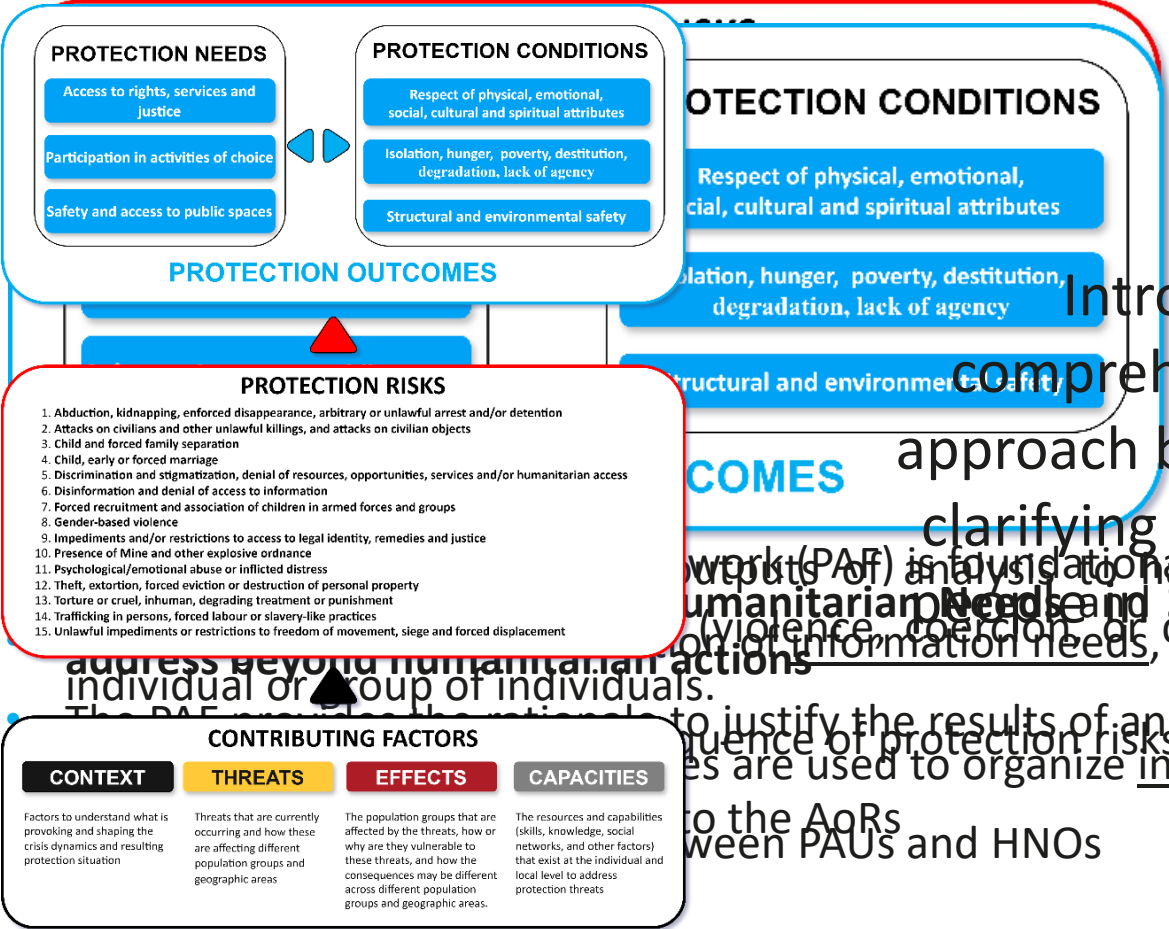
Example



What

2024 Objectives

The Protection Cluster & AoR approach to contribute to the JIAF is based on a common framework for needs analysis. The framework builds upon the analysis and understanding of protection risks that people affected by conflict and disaster face.



Introduction of a comprehensive analytical approach building on the PAF, clarifying how we identified works (PAF) in a systematic way, including understanding of humanitarian needs and protection conditions that should be addressed beyond humanitarian actions individual or group of individuals. The PAF is fundamental to justify the results of analyses influence of protection risks, measured through 3 dimensions to the AoRs between PAUs and HNOs

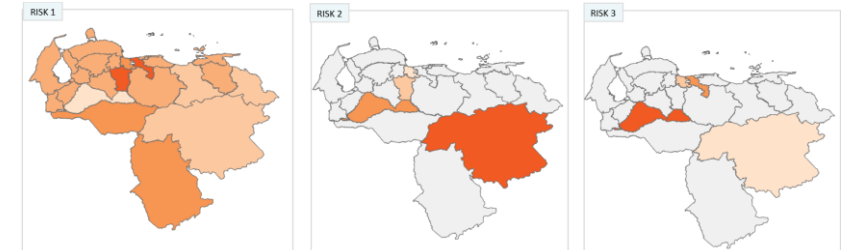


Relation between GPU and HNO Severity

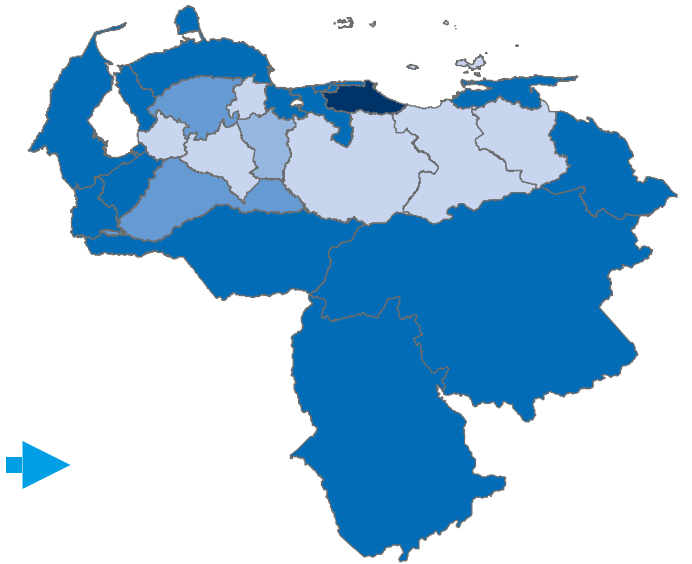
Subnational severity assessment based on VALUE JUDGEMENT

It should be carried out at the same level of the HNO scope

ADM1_CODE	ADM1_ES	ABDUCTION, KIDNAPPING, ENFORCED DISAPPEARANCE, ARBITRARY OR UNLAWFUL ARREST AND/OR DETENTION	ATTACKS ON CIVILIANS AND OTHER UNLAWFUL KILLINGS AND ATTACKS ON CIVILIAN OBJECTS	CHILD AND FORCED FAMILY SEPARATION	CHILD, EARLY OR FORCED MARRIAGE
VE02	Amazonas	Phase 3 (Medium)	Phase 2 (Low)	Phase 3 (Medium)	Phase 3 (Medium)
VE03	Anzoátegui	Phase 3 (Medium)	Phase 2 (Low)	Phase 3 (Medium)	Phase 3 (Medium)
VE04	Apure	Phase 2 (Low)	Phase 2 (Low)	Phase 2 (Low)	Phase 2 (Medium)
VE05	Áragua	Phase 3 (Medium)	Phase 2 (Low)	Phase 3 (Medium)	Phase 2 (Low)
VE06	Bolívar	Phase 1 (Very Low)	Phase 1 (Very Low)	Phase 2 (Low)	Phase 2 (Low)
VE07	Bolívar	Phase 2 (Low)	Phase 2 (Low)	Phase 3 (Medium)	Phase 3 (Medium)
VE08	Carabobo	Phase 3 (Medium)	Phase 2 (Low)	Phase 4 (High)	Phase 3 (Medium)
VE09	Cárdex	Phase 3 (Medium)	Phase 2 (Low)	Phase 3 (Medium)	Phase 3 (Medium)
VE10	Delta Amacuro	Phase 2 (Low)	Phase 2 (Low)	Phase 3 (Medium)	Phase 3 (Medium)
VE11	Distrito Capital	Phase 2 (Low)	Phase 2 (Low)	Phase 3 (Medium)	Phase 3 (Medium)
VE12	Falcón	Phase 2 (Low)	Phase 2 (Low)	Phase 4 (High)	Phase 3 (Medium)
VE13	Guárico	Phase 3 (Medium)	Phase 2 (Low)	Phase 3 (Medium)	Phase 3 (Medium)
VE14	La Guayra	Phase 3 (Medium)	Phase 2 (Low)	Phase 3 (Medium)	Phase 3 (Medium)
VE15	Lara	Phase 2 (Low)	Phase 1 (Very Low)	Phase 3 (Medium)	Phase 3 (Medium)
VE16	Mérida	Phase 1 (Very Low)	Phase 1 (Very Low)	Phase 4 (High)	Phase 2 (Low)
VE17	Miranda	Phase 4 (High)	Phase 1 (Very Low)	Phase 2 (Low)	Phase 3 (Medium)
VE18	Munagas	Phase 4 (High)	Phase 1 (Very Low)	Phase 2 (Low)	Phase 3 (Medium)
VE19	Nueva Esparta	Phase 2 (Low)	Phase 2 (Low)	Phase 3 (Medium)	Phase 3 (Medium)
VE20	Portuguesa	Phase 2 (Low)	Phase 2 (Low)	Phase 3 (Medium)	Phase 3 (Medium)
VE21	Sucre	Phase 2 (Low)	Phase 1 (Very Low)	Phase 3 (Medium)	Phase 3 (Low)
VE22	Táchira	Phase 2 (Low)	Phase 1 (Very Low)	Phase 3 (Medium)	Phase 3 (Low)
VE23	Trujillo	Phase 2 (Low)	Phase 1 (Very Low)	Phase 3 (Medium)	Phase 3 (Low)
VE24	Yamocuy	Phase 2 (Low)	Phase 1 (Very Low)	Phase 3 (Medium)	Phase 3 (Low)
VE25	Zulia	Phase 3 (Medium)	Phase 3 (Medium)	Phase 4 (High)	Phase 3 (Medium)



- Guided by risks severity criteria
- Adapt based on resources and staff
- Engage subnational coordination



INFORM PAU

FEED GPU

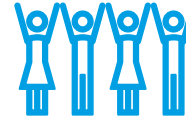
INFORM HNO

People in need dimensions

Three proxy indicators corresponding to each dimensions are used consistently by the **Protection Cluster and the Areas of Responsibility** across all countries, to have a common and comparable approach in the definition of PIN.



SAFETY





PARTICIPATION



ACCESS TO SERVICES

<p>Individual's physical, emotional, psychological, and social safety, is not discriminated based on personal conditions or characteristics.</p>	<p>Individual's are able to engage in safe practices, including participation in social, educational, and economic activities of their choice.</p>	<p>Individuals have access to services and justice, proportionate to age, gender, and diversity needs.</p>
--------------------------------------------------------------------------------------------------------------------------------------------------	----------------------------------------------------------------------------------------------------------------------------------------------------	------------------------------------------------------------------------------------------------------------

*Working draft

DIMENSION	INDICATOR	SUB-INDICATORS
	<p>% of individuals, which physical, emotional, psychological and social safety is not discriminated by their personal conditions, activities and characteristics (SAFETY)</p>	<p>Freedom of movement </p>

Indicators already used by GPC and AoRs

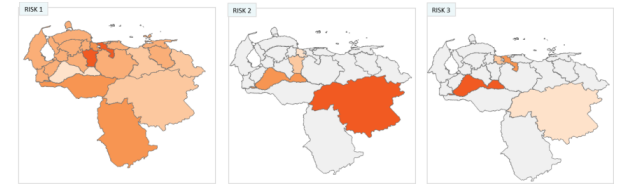


Relation between GPU and HNO Severity

Subnational severity assessment based on VALUE JUDGEMENT

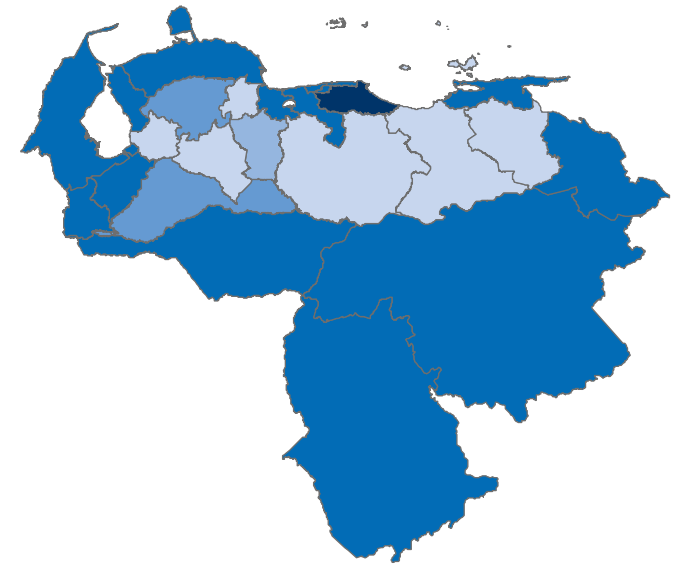
If **no data** available JUNE-SEPTEMBER

- Severity can be used for HNO severity



If **partial data** available JUNE-SEPTEMBER

- Severity can be revised based on data



If **data** available JUNE-SEPTEMBER

- Consolidated use of 3 needs dimensions



What is available to Coordination Teams

METHODOLOGY DOCUMENT



- Protection cluster methodological approach
- PIN/Severity Guidance (common to AoRs)



Clarification vis-à-vis other sectors and OCHA on:

- Use of value judgement elicitation
- Ensure coherence between using risks and JIAF needs approach

PROTECTION RISKS CRITERIA



- Criteria to guide value judgement and convergence of evidence



Increase credibility and reliability of risk prioritization

COMMON DATABANKS



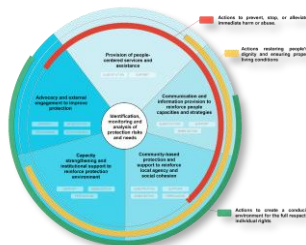
- Question bank
- Indicators bank (organized against PAF, 15 risks and Needs Pillars)



Global alignment on questions/data vis-à-vis external actors (REACH, DTM, AoRs, etc..)

Reduce IM-related workload

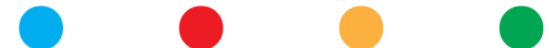
RESPONSE FRAMEWORK



- Revised 4/5 Tool
- *Protection Cluster approach



Clarification of cluster activities and their contribution to risk reduction





Contribution to JIAF

Overall approach to HNO analysis

RISK SEVERITY
JUNE

PAU



AGGREGATED
PROTECTION
RISKS SEVERITY

(March, June, *October)
(Aggregation of multiple risks)



PROTECTION
CLUSTER SECTOR
SEVERITY / PIN



- Proactive contribution to **HNO scope**
- **Briefing/engagement** ICCG, HC, HCT
- **GPC proactive engagement** with donors/OCHA
- **Sector specific joint approaches** for HNO data collection and analysis

HNO Outcome indicator **HR/IHL Violations**

- People exposed to **protection risks** to reinforce defence
- **Final severity / PIN results** and justification



What is common between PC and AoRs

- Use of the three **needs dimensions to classify indicators for PIN**
- **Information needs harmonization** against protection risks
- Use of **protection risks severity** in addition to PC and AoRs severity for final calculation
- Jointly revised language of **Protection risks severity criteria (test)**

In 2024 we would need to adapt and learn from application.



What do we concretely present and when?

**RISK SEVERITY
JUNE**

PAU



HNO SCOPE



Q2-Q3

- Data from risk severity
- PAU
- Risk assessment report (15 risks)
- 1-2 pag. Advocacy paper from PAU

**AGGREGATED
PROTECTION
RISKS SEVERITY**

(March, June, *October)
(Aggregation of multiple risks)



**OUTCOME
INDICATOR**



Q3-Q4

- Data from risk severity
- Proxy analysis agreed with OCHA on selected priority risks

**PROTECTION
CLUSTER SECTOR
SEVERITY / PIN**

**SECTOR
ANALYSIS**



Q3-Q4

- PIN
- Severity
- 1-2 pag. methodology document on selected indicators and rationale
- PAU Brief (or update of PAU June)





Q&A

STRENGTHENING ENGAGEMENT WITH HPC

2024



Information & Contacts

For any information or support please contact:

Protection analysis: Francesco Michele michele@unhcr.org

Information Management: Kashif Rehman rehmanka@unhcr.org

General Support: Lisa Monaghan lisa.monaghan@nrc.no

For guidance, please refer to GPC Website

Protection analysis: [Field Support / Protection Analytical Framework](#)

Information Management: [Field Support / Information Management Analysis Toolbox](#)





Global Protection Cluster

